



# THE LONE STAR DISPATCH

THE GOLD STAR STANDARD

SPRING 2023 ISSUE

## A Message FROM OUR PRESIDENT

As I write this, 2023 is well underway and despite the economic headwinds, we have had a successful first quarter. However, we cannot become complacent and assume the worst is over with respect to the economic times we are in. I will touch on a couple of areas of concern, as well as areas for potential success.

Despite the passing of the Inflation Reduction Act, which extended incentives for renewable energy projects, there is very little guidance with respect to how those incentives are going to work and the fear is that this guidance will not be completely written until the end of summer. For this reason, our revenue from the renewable energy business is lower than it has been in years.

Conversely, our Caterpillar business is on track to be a record year for this customer. However, they are pressuring all their carriers to lower rates and are tightening their purse-strings anywhere they can to cut costs. Since we are at the bottom of the food chain, those cuts usually hit transportation companies first. The way we combat this is through superior service and making sure that the metrics we are held accountable to with this customer are maintained. Those metrics are simple: pick up on time and deliver on time!

Our oil and gas business is somewhat sluggish; however, we do have a backlog in that sector of our business. As oil prices are still high, we are hopeful that the business we have been awarded will continue to grow. Rate pressure is also tough in this market, but we can expect more work in this area if we provide excellent service and solutions to our customers.

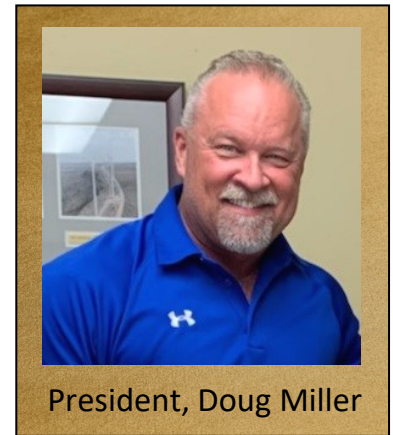
**The recipe for success in these times is relatively simple: superior service, competitive pricing, staying close to our customers, and controlling our costs.**

There is a large demand in the technology industry and Lone Star is uniquely positioned to be successful in this segment of business. There are at least a half-dozen silicon chip plants being built around the country, and we are currently moving freight to one in AZ and NM. What is unique about this business is that many of these facilities will be built over a several-year period, which will allow us to participate in this work for years to come.

While I do not want sound overly pessimistic, I do hope that sharing concerns over the future state of business will give everyone reason to pause and think of ways that each of us can contribute to our success in a year that is going to test our abilities. I believe the recipe for success in these times is relatively simple: **superior service, competitive pricing, staying close to our customers, and controlling our costs.**

Each of us can play a part in our success in 2023. These times do not last forever. We have faced them in the past and have navigated our way through them successfully. After all, Lone Star is still here where so many other carriers have failed! And we are here because we have consistently followed our recipe for success. But it takes all of us doing our part--communicating, doing what we say we are going to do for our customers and each other, and then celebrating our successes. I am confident we will have many more to come!

Thank you to each of you, for everything you do!



President, Doug Miller





Jeff Cooney  
Vice President of Safety

## SAFETY ZONE >>>>

To avoid accidents, you must continually adjust your driving to maintain control of your vehicle, managing the time and space available in a specific situation.

### MANAGING SPEED

Safe driving means more than simply following the posted speed limit. It means “managing speed” by adjusting to road conditions, curves, hills, visibility and traffic flow. Much of that adjustment involves the ability to stop. Therefore, it is important to understand the three factors involved in stopping your vehicle.

**Perception Distance:** The distance a vehicle travels from the time you see a hazard to the movement your brain acknowledges it.

**Reaction Distance:** The distance a vehicle travels from the time your brain tells your foot to move from the throttle until your foot depresses the brake pedal.

**Braking Distance:** The distance it takes to stop once the brakes are applied. Braking distance is affected by the weight, length and speed of the vehicle, and road conditions.

### MANAGING SPACE

Space allows you time to think and react to situations. Safe driving includes managing all space surrounding your vehicle-ahead, behind, above, below, and around-and leaving enough space for safe operation.

**The Space Ahead:** Of all the space around your vehicle, the area ahead is the most critical. Allowing proper following distance gives you adequate time to slow, stop or take evasive action when a hazard is present, and gives you maximum visibility to what is in front of you. If road conditions indicate it, allow even more room than usual.

**The Space Behind:** The sooner you can identify problems behind you and take appropriate action, the less likely you are to be involved in an accident. Scan all your mirrors to know what is going on behind you. Stay to the right to allow faster moving vehicles to pass. Give clear and early signals when changing lanes. Anticipate stops and begin them early.

**The Space Above:** An accident can easily happen if you take a chance on making it under a low clearance point. Know the height of the equipment and load you are operating and pay attention to overhead structures.

**The Space Below:** The space under your equipment can be very limited, especially with some of our trailing equipment such as a RDD or SLE type trailer. Railroad grade crossings, unpaved lots, crossing the crest of a road-way are all areas of concern. If you have any doubt, look for an alternate means to traverse the area.

**The Space Around:** Commercial motor vehicles are wide and typically take up most of the driving lane. Avoid hugging the center line of the roadway as it can be very easy to drift over the center line in to oncoming traffic. Avoid hugging the right side of the road as a soft shoulder can cause you to lose control of your vehicle. When possible, avoid traveling alongside other vehicles-another driver may change lanes suddenly turning into your vehicle or your vehicle may be trapped, leaving you unable to change lanes if necessary.





We are pleased to present Group One's new logo as part of the LST company brand. This logo has been updated to reflect who we are today and to symbolize our dynamic future. "I am very proud to show this to you all! I believe this truly depicts how we have worked so hard to bring two worlds together to make one big family. ONE FAMILY, ONE TEAM, working together; a foundation in Lone Star's decades of success, now shown in our brand!"

- Brendan Whisenant, Operations Manager



CFMOTO is Group One's newest show truck customer. Among the best ATV companies in the world, CFMOTO is a world-class quality ATV manufacturer. It's USA headquarters are located in Plymouth, Minnesota, but it has been conquering terrain from sea to shining sea with its first trademark liquid-cooled 4-stroke engine being created in Hangzhou, China. **Tommy Carroll, Show Manager,** and **Brendan Whisenant, Operations Manager,** hosting CFMOTO's motorcycle demo, alongside Lai Guigui, President of CFMOTO are featured top left.



**W**e love to showcase our drivers using photos of your truck and your loads, but we can't do it without you! Send us 3-5 photos of your haul and be sure the entire truck and trailer are visible. Include driver name, destination, dimensions and weight. Have fun! Get creative! Snap & Send to **Social@LoneStar-LLC.com** and you just might be featured in a future newsletter or on our LST Facebook page, where we post daily.

**Roy Sharpley (900849)** Pipe Building Materials, from Provo, UT to Liberty Hill, TX. 48' L x 8' 6" W x 13' 6" H, 37,000 lbs. (featured below)



**Ricky Underwood (900683)** Vessel Skid, from Henderson, CO to Deer Park, TX. 76' L x 12' W x 16' H, 39,000 lbs. (featured below)



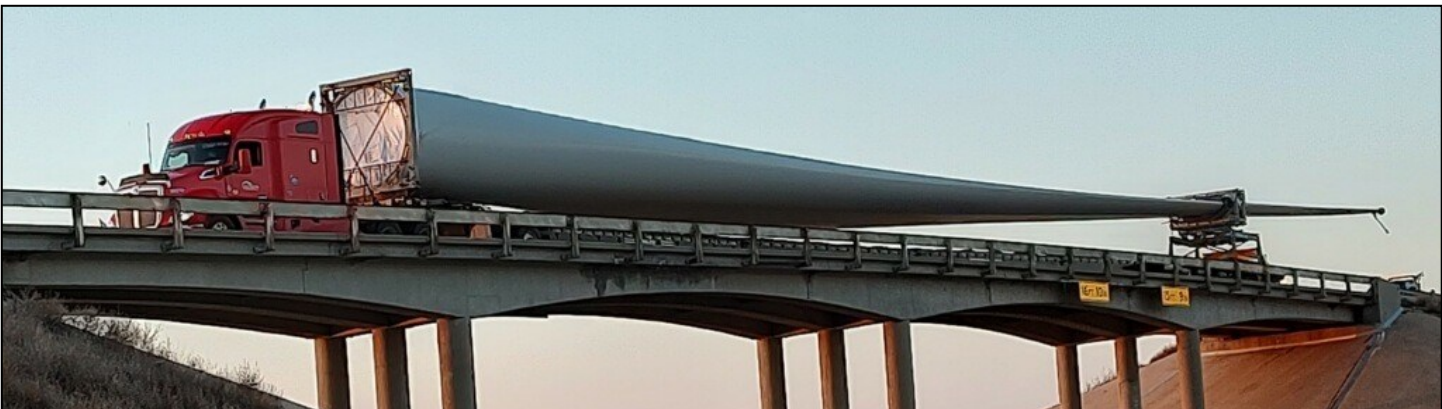
**HC Buchanan (900831)** Machine Parts, from Fort Worth, TX to Spring Hope, NC. 48' L x 8' W x 8' H, 67,000 lbs. (featured below)



**Earl Arnold (900899)** D8T Dozer, from Euless, TX to Irving, TX. 80' L x 13' 8" W x 14' H, 155,000 lbs. (featured below)



**Stanton Dorsett (900774)** V150 74m Blade, from Brownsville, TX to Winslow, AZ. 237' L x 14' W x 15'6" H, 127,000 lbs. (featured below)



# STRIKE A POSE



Zayne McGaha (500657)



Dennis Dent (500650)



Kevin Bohn (500998)



Lee Taylor (500637)



Walter Warner (500651)



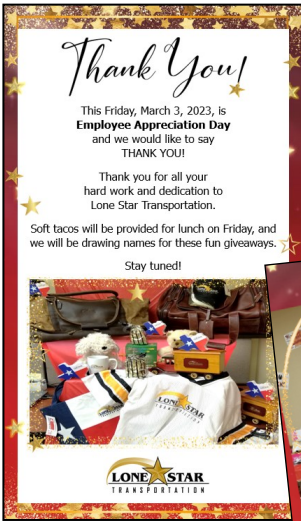
Wyatt Young (500621)



Tim Hopkins (500609)

# EMPLOYEE APPRECIATION DAY!

Lone Star values each and every employee and the part each of you play to make us successful—from focusing on the customers and never giving them a reason to look elsewhere for their transportation and logistics needs, to working efficiently to cut costs and helping each other across all our diverse operations. This year, each LST division celebrated Employee Appreciation Day by expressing their gratitude in various way, from providing lunch to offering some fun LST giveaways.



Check out our slideshow featuring more photos from each of these events on the LST Facebook page!



## DRIVER of the YEAR

We are pleased to congratulate **Kyle Gooch (900696)** on being named the Lone Star Transportation 2022 Driver of the Year!

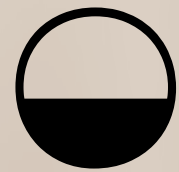
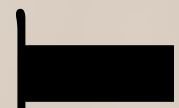
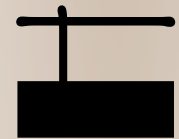
Kyle has been with Lone Star since 2009. He is a level 4 driver and does an outstanding job representing Lone Star Transportation in a professional manner.

Kyle has also been a staple in representing Lone Star Transportation each year as we participated in Wreaths Across America, hauling many truckloads of wreaths.

The Driver of the Year is selected from previously honored Drivers of the Month, who are chosen based on tenure, number of miles and loads run, claims and safety violations, among other criteria.



Featured from left to right: Doug Miller, Kyle Gooch, Cheryl Gooch, and Jeff Cooney



The last few months we have welcomed a brand new wave of talented recruiters to the Lone Star team. We would like to share a little about each of them.



### Nicole Bishop

I started with Steelman (Springfield Division) in 2019 as a recruiter. I accepted the role of Recruiting Manager in January 2023, and relocated to Ft Worth, TX. I enjoy helping qualified drivers find their best fit to excel their career and manage a good work life balance. Remember when a driver that you referred comes on board, WE PAY YOU! Reach out to the recruiting team for more information!

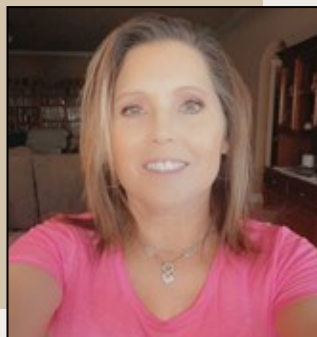
### Melanie Borden

Hey, I'm Melanie. I started with Steelman in 2005. I left to work in North Dakota for several years and have been back with Steelman, and now Lone Star, since January of 2018. I worked in several positions before becoming the Driver Liaison.

I am excited by how Lone Star is growing as a company and how we continue to evolve as a team. I'm loving what I do and love working for a company that fosters growth.



### Cina Moyer



I've enjoyed working in the Transportation industry, in various positions, for the last 21 years. It has definitely been interesting. Prior to coming on board with Lone Star in February 2023, I worked for Ryder Logistics for approximately 13 years in Fleet Management, Supply Chain, Dedicated Transportation, Insurance and as a Recruiter for Warehouse customers. I love Lone Star and feel very blessed to have such an amazing boss, amazing team, and to be part of the Lone Star family!

### Emah Tyler

Hi, I'm Emah! I started with Lone Star in February 2023. I am the recruiter for the Drive Away division (Group One) out of Kansas City, MO. I am so blessed to be a part of such an amazing Lone Star family, and I am so excited for what the future holds with this recruiting team!



**Stay CONNECTED**

- Submit News Items to: [Social@LoneStar-LLC.com](mailto:Social@LoneStar-LLC.com)
- Lone Star Website: [LoneStar-LLC.com](http://LoneStar-LLC.com)
- LST Company Page:** Lone Star Transportation, LLC
- LST Driver Group Page:** The Official Lone Star Driver Page
- @lonestartransportation
- Lone Star Transportation YouTube
- 1100 Northway Drive Fort Worth, TX 76131
- 1-800-541-8271

# Congratulations

**Aubrey Curtis (Office Manager, Group One, Kansas City, MO)** on the birth of her daughter, Addison "Addie" Rose Curtis, born on February 22, 2023. She weighed 6 pounds 10 ounces and was 19.25 inches long. (A)

**Becky Harris (Terminal Manager, Shreveport, LA)** on the birth of her grandson, Ashton Neil Hardman, born on February 27, 2023. He weighed 6 pounds 5 ounces and was 18 3/4 inches long. (B)

**Betsy Gillum (HR Administrative Assistant, Fort Worth, TX)** on the birth of her grandson, Dustyn Blain, born on March 28, 2023. He weighed 7 pounds 4 ounces and was 19 inches long. (C)

**Garland Brown (VP of Maintenance, Gainesville, TX)** on his retirement. Garland's 25 years of service have been an incredible asset to Lone Star Transportation and the Maintenance Department. May your shenanigans continue into retirement! (D)

**Kyle Gooch (Professional Driver, Fort Worth, TX)** on his retirement. Kyle has been with Lone Star since 2009. May you and Cheryl enjoy a relaxing retirement at home in Tennessee! (E)

**Tim McCandless (Dispatcher and Load Coordinator, Springfield, MO)** on his retirement. Tim started his career 32 years ago working for Steelman. May all your fish be as big as your stories! (F)

